

Sichtflugkarte
Visual Operation Chart

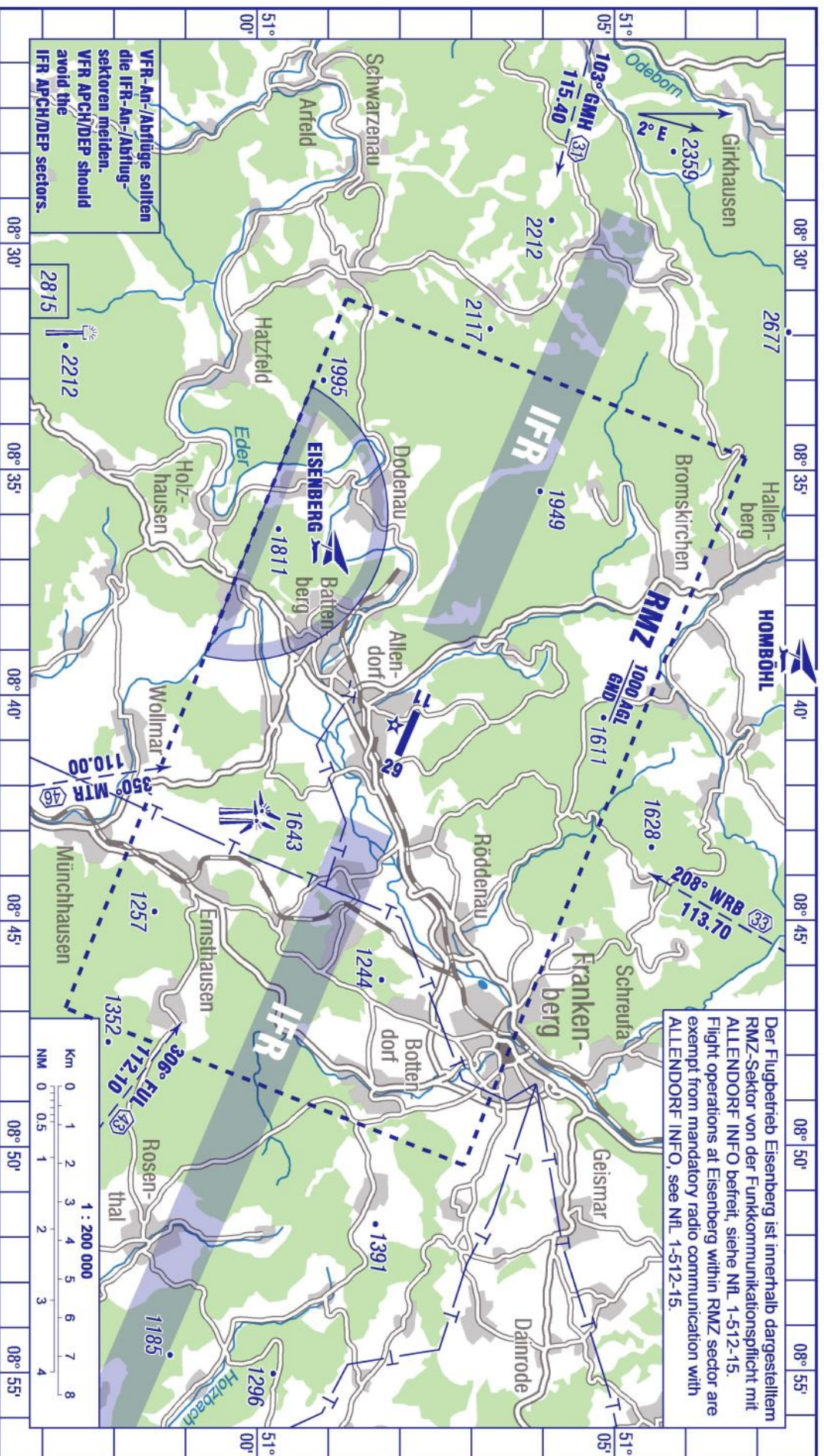
AD ELEV 1164

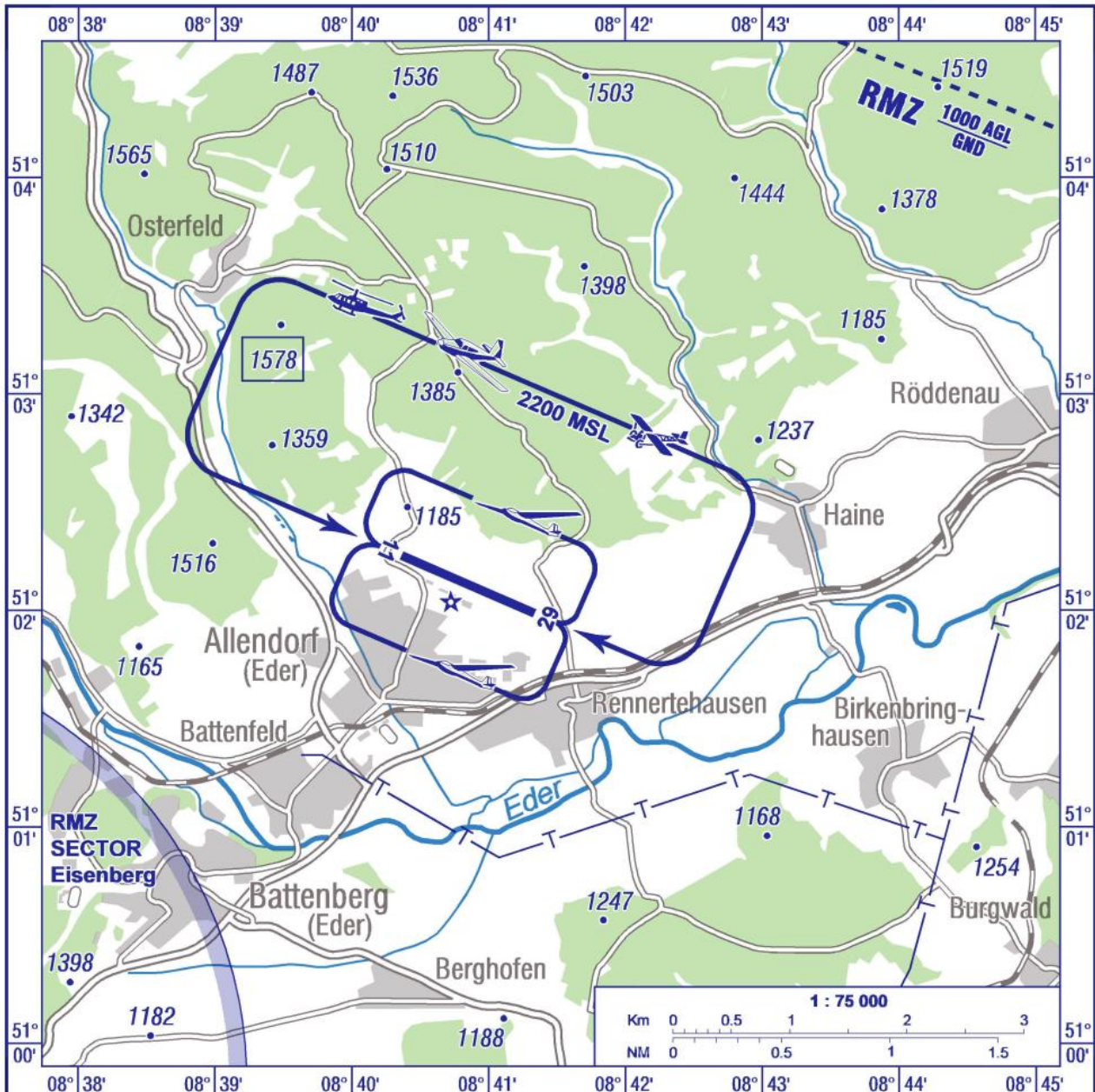
ALLENDORF/IEDER
EDFQ

FIS
LANGEN INFORMATION 119.150 129.875
ALLENDORF ATIS 120.475

ALLENDORF INFO
118.175 En/Ge (15 NM 3000 ft GND)

Berichtigung: RMZ-Sektor Eisenberg, Bemerkung.
Correction: RMZ sector Eisenberg, remark.





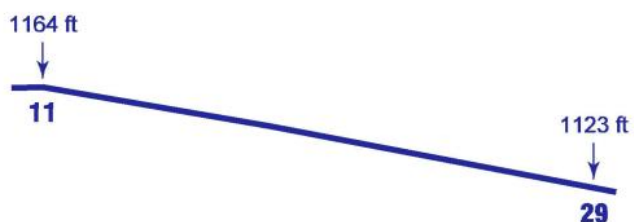
Berichtigung: RMZ-Sektor Eisenberg.
Correction: RMZ sector Eisenberg.

RWY (MAG)	Dimensions	Surface	Strength	TORA	LDA
11 (111) 29 (291)	1240 x 30 m	ASPH	PCN 40 F/B/X/T HEL 5700 kg MPW	1240 m	1240 m

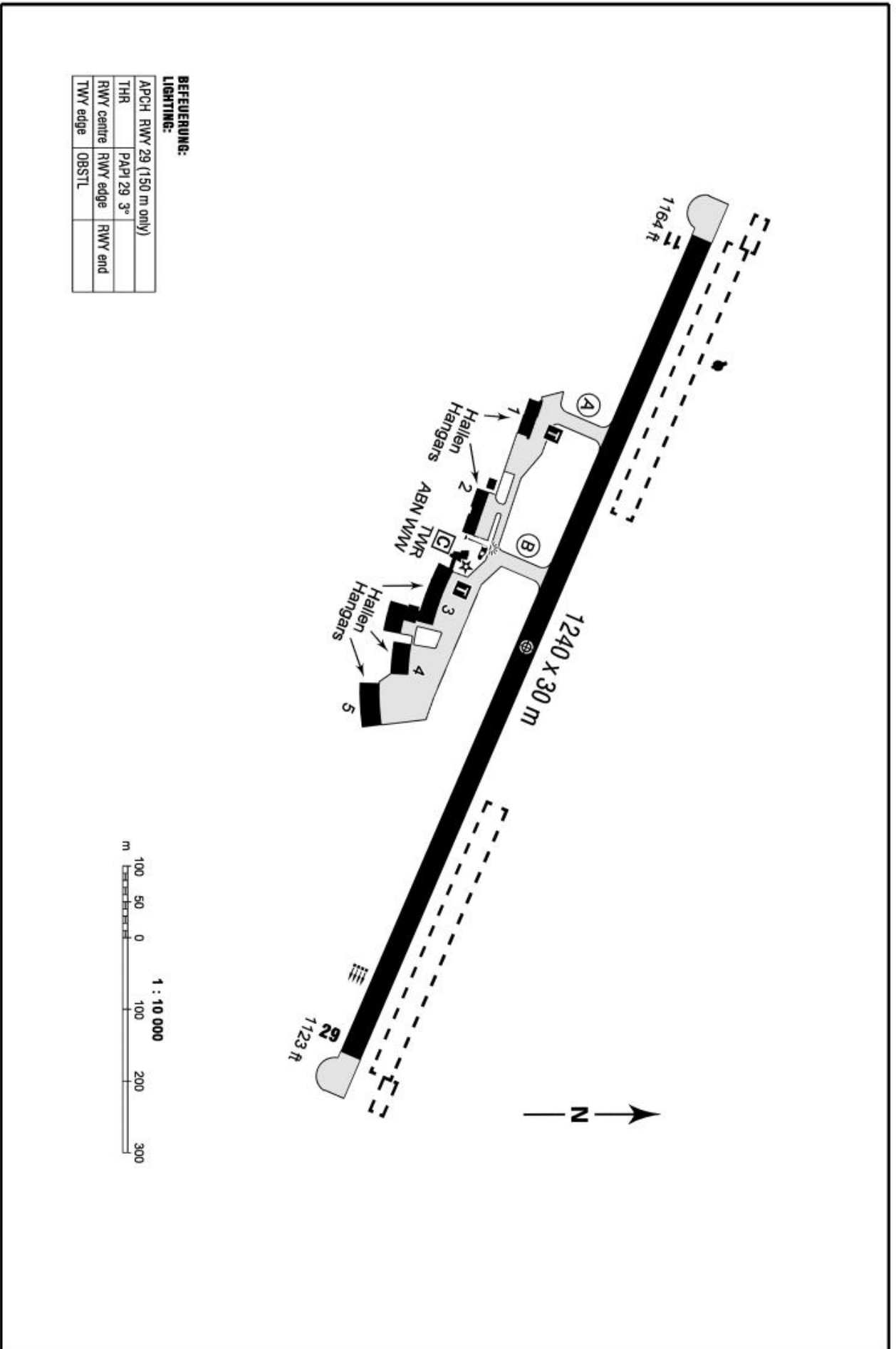
Die in der Umgebung des Flugplatzes liegenden Wohngebiete sind besonders lärmempfindlich, Überflüge sind möglichst zu vermeiden.

The residential areas located in the vicinity of the aerodrome are especially sensitive to noise, overflights shall be avoided as far as possible.

Längsprofil / Longitudinal profile:
RWY 11/29



Berichtigung: Halle 5.
Correction: Hangar 5.



BEFEUERUNG:

APCH RWY 29 (150 m only)		
THR	PAPI 29 3°	
RWY centre	RWY edge	RWY end
TWY edge	OBSTL	